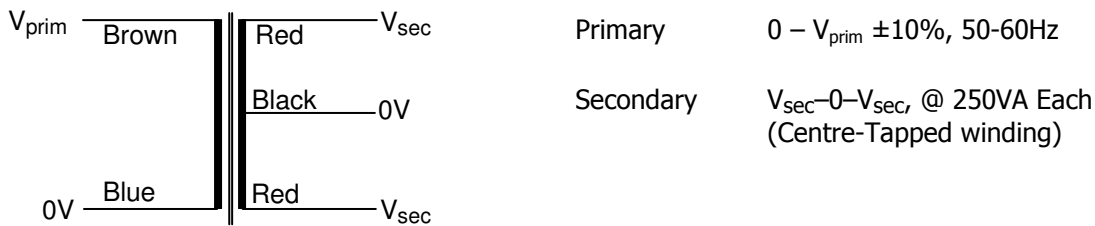


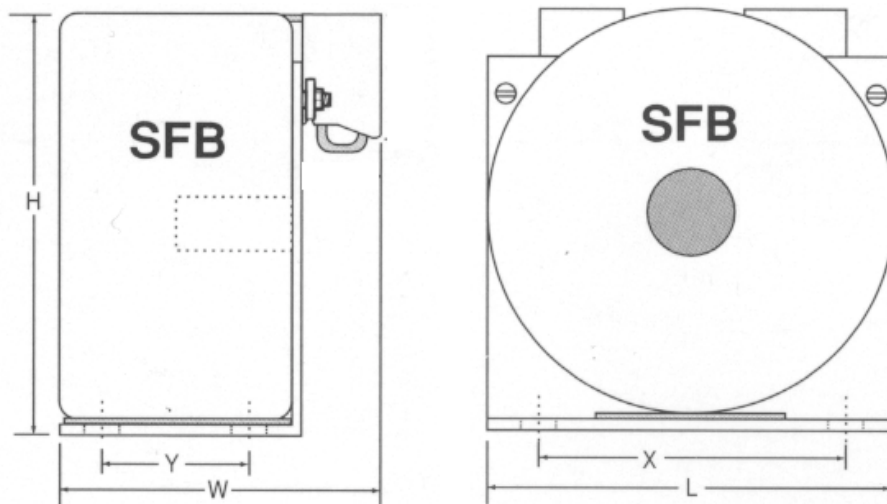
Datasheet :: Control Panel Transformers :: 500VA



	Nuvotem Talema Part Number	Primary V_{prim} [V]	Full Load V_{sec} [V]	Rated Current Per Sec [A]	No Load V_{sec} [V]
**	SFB0500-230-12	230	12-0-12	20.833	12.61-0-12.61
****	SFB0500-230-24	230	24-0-24	10.417	25.60-0-25.60
	SFB0500-230-55	230	55-0-55	4.545	58.61-0-58.61
**	SFB0500-400-12	400	12-0-12	20.833	12.61-0-12.61
****	SFB0500-400-24	400	24-0-24	10.417	25.60-0-25.60
	SFB0500-400-55	400	55-0-55	4.545	58.61-0-58.61

Temperature Class: Winding Wire (Primary & Secondary) Class H (180 °C)
 Insulation between windings Class B (130 °C)
 Connection lead insulation Class A (105 °C)

Standards: Designed and manufactured to conform to the requirements of :
 EN61558 Class II, Non-Short-Circuit-Proof
 EN60065 Class II (IEC65)
 EN60950 Class II
 VDE0550 Class II
 VDE0551 Class II
 BS415 Class II



Physical Data Dimensions (L x W x H) 135 x 82 x 138mm
Items ** 135 x **103** x 138mm (Due to larger terminals)
 Mounting Holes (X x Y) 113 x 41mm between centres
 Approximate Weight 4.20 Kg

Terminations Screw terminals suitable for conductors 0.5mm² to 4mm², rated at 16A (VDE0551)
 Material : Polyamide 6/6 (PA 6/6), Meets requirements of VBG4 and VDE0106, part 100, "Finger Safety Guard" VDE0470, Part 1
 ** Note : Items marked ** have two secondary terminals suitable for 2.5mm² to 16mm², which are rated at 63A (VDE0551), with two terminals for 0V.
 **** Note : Items marked **** have 2 terminals for 0V (4mm²)